

Westbury

Address: Westbury Village Green, Lonsdale Promenade, Westbury TAS 7303– Allow 30 mins from Launceston CBD

Meet: Village Green near the RSL club

Start: 1:00pm

Divisions 1 and 3 will start at 1pm. Division 2 will start at the conclusion of Division 3 or earlier if volunteer timekeepers are available.

Distances:

Division 1 – 6km

Division 2 – 3km

Division 3 – 1.5km

Type of Race: Handicap events today for all races

Toilets: at the Westbury Town Hall next to the council chambers. (or at the RSL)

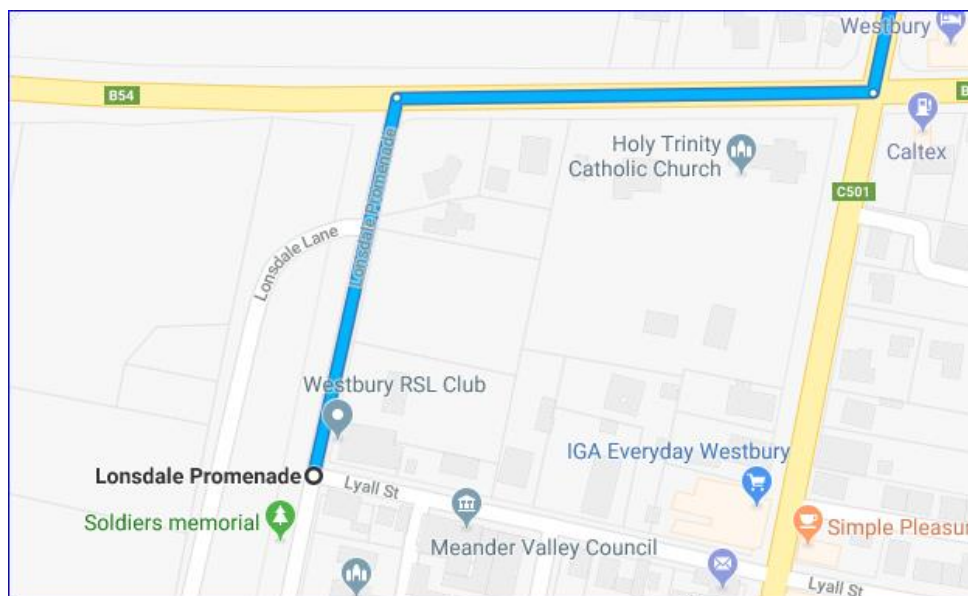
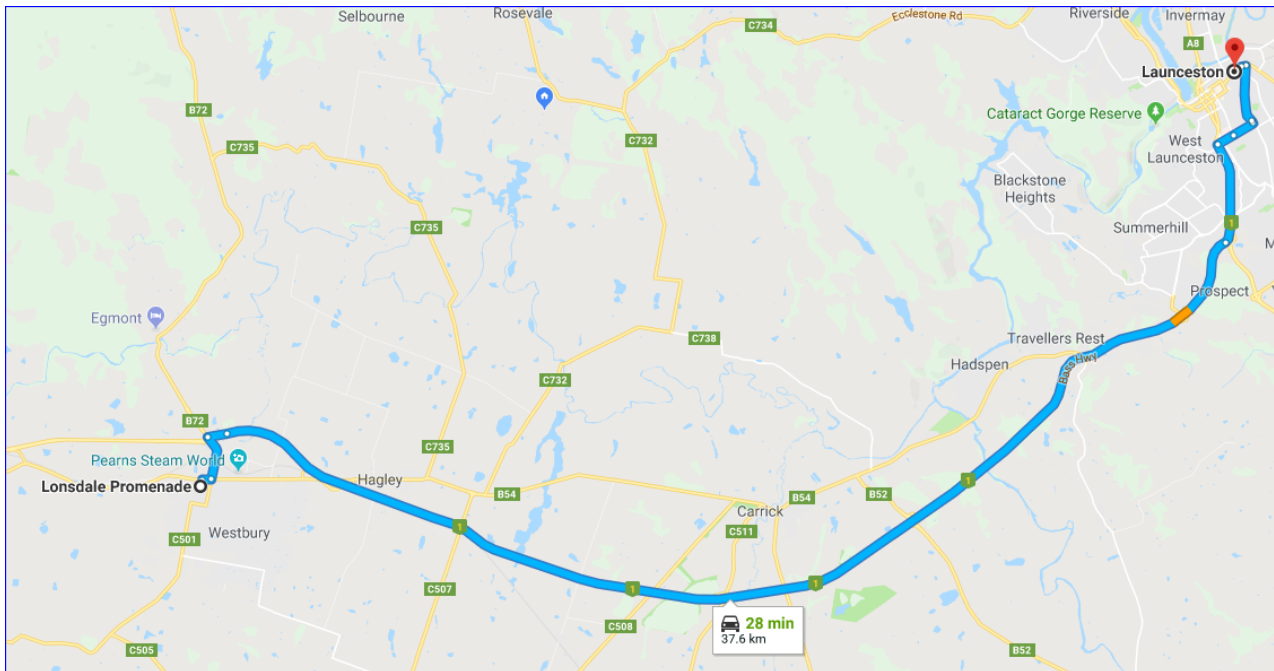
Course Description: Course is around the village green and along the footpath into and around the common and return (2x for the long course). Weather permitting, as the common does occasionally flood. It may be necessary to divert along Mary Street if this happens. Flat easy trail and grass with a small section of footpath.

This is a Personal Best Event.



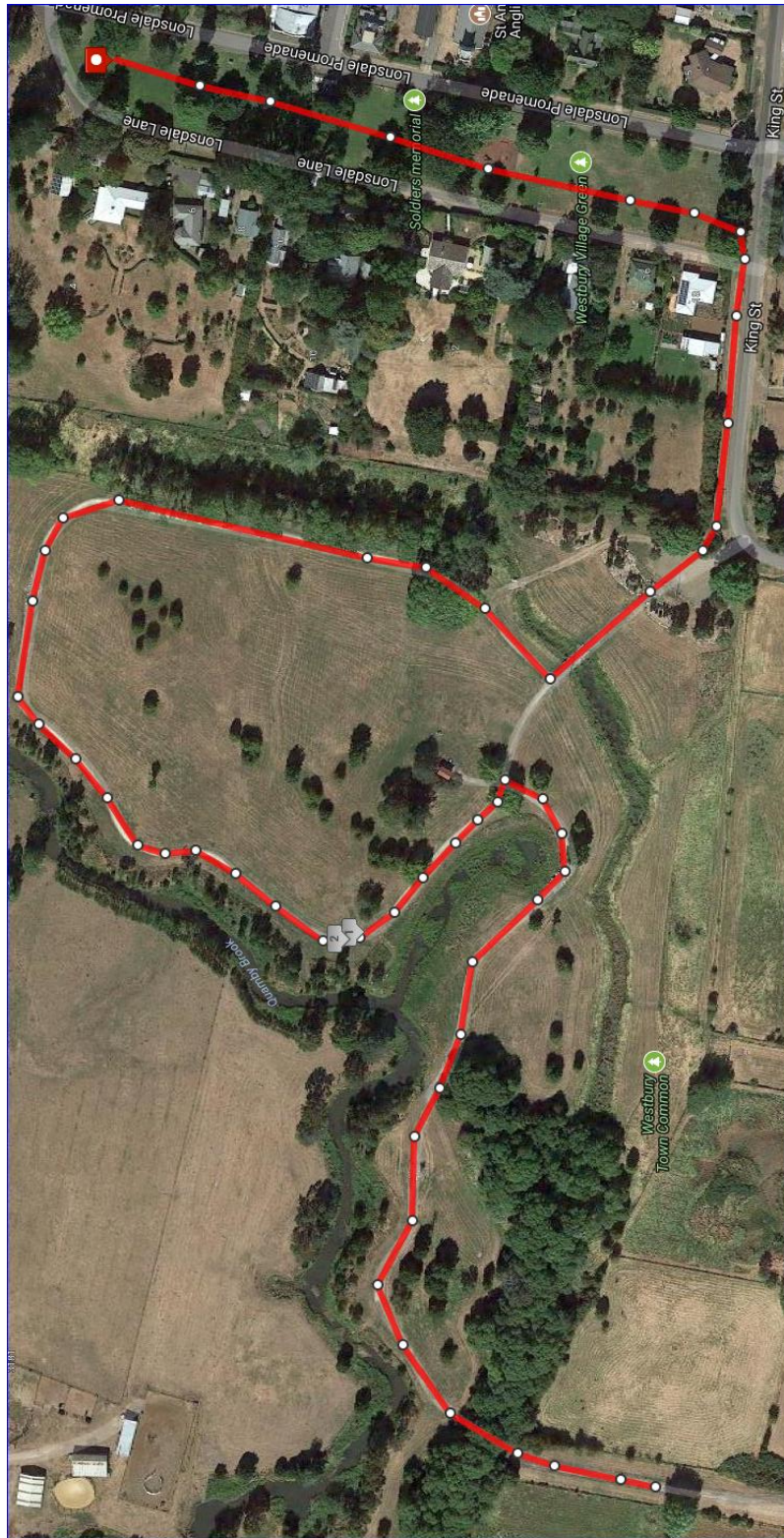
Map to Venue:

At Westbury turn left into William Street (opposite the Pub) and then right into Lyall Street, it is at the end of the street (or turn off directly from Meander Valley Highway into Lonsdale Promenade)



Event: 6 & 3km

2 laps or 1



Event 1.5km:

