

Royal Park

Address: 13 Park Street, Launceston.

Meet: BBQ area opposite the boat ramp

Distances: 5km, 3km and 1.5km

Start: 1:00pm

Type of Race: Handicap events today for all races

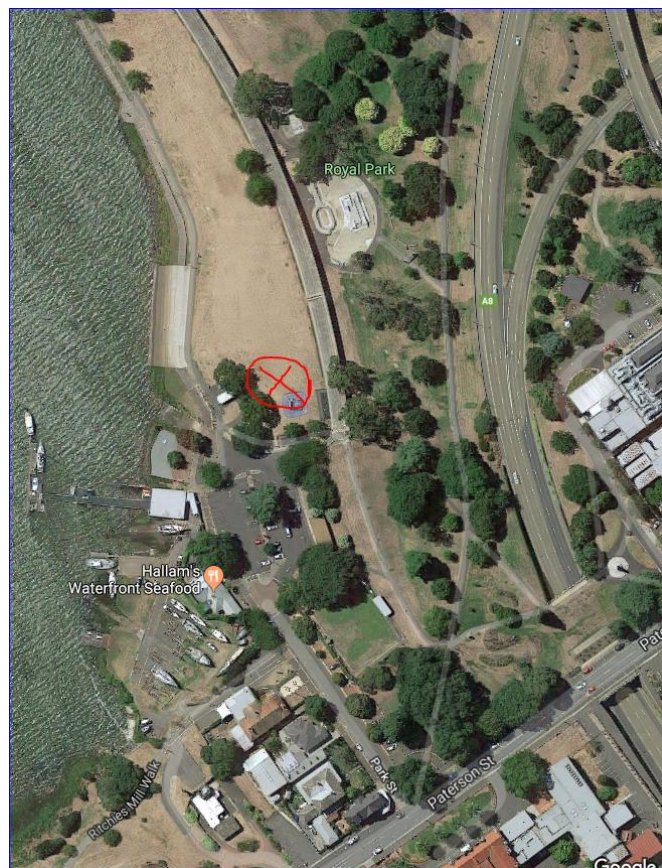
Order of events:

1:00 - Divisions 1

1:00 - Division 3 (as long as there are enough timekeepers)

1:20 - Division 2 (or at the conclusion of Division 3, whichever comes first)

Course : Short courses are around the park. Long Course through the seaport, across the pedestrian bridge, and along the flood levy and return.



Event: Division 1 – 5km

Course Description: Out and back approximately as per this map.



Division 2 - 3km course Two laps of Division 3 – Out and back as per this map (twice)



Division 3 - 1.5km course: Out and back approximately as per this map

