

Hadspen

Address: 1A Claire Street, Hadspen (allow 15 mins from CBD)

Meet: Hadspen Recreation Park (Claire Street, Hadspen)

Start: 1:00pm

Order of events:

Div. 3 - 1.5km Boys combined with Primary School Series

Div. 3 - 1.5km Girls combined with Primary School Series

Div. 2 – 3km combined with Senior School Series (male and female run together)

Div. 1 – 6km

Distances:

- Division 1 – 6km
- Division 2 – 3km
- Division 3 – 1.5km

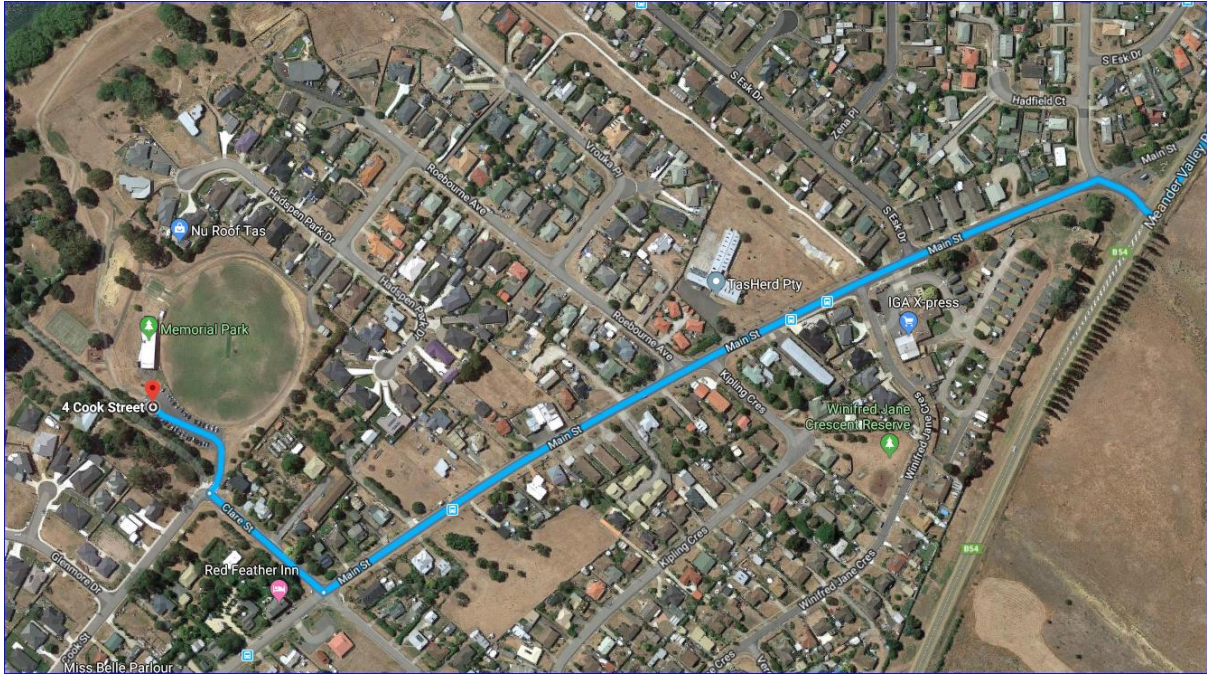
Type of Race: Handicap for Div 1 – Sealed handicap for Div 2 and 3

Course Description: Trails and paths around the Cricket ground and along the river walk area.

**This is a Personal Best Competition
Event.**

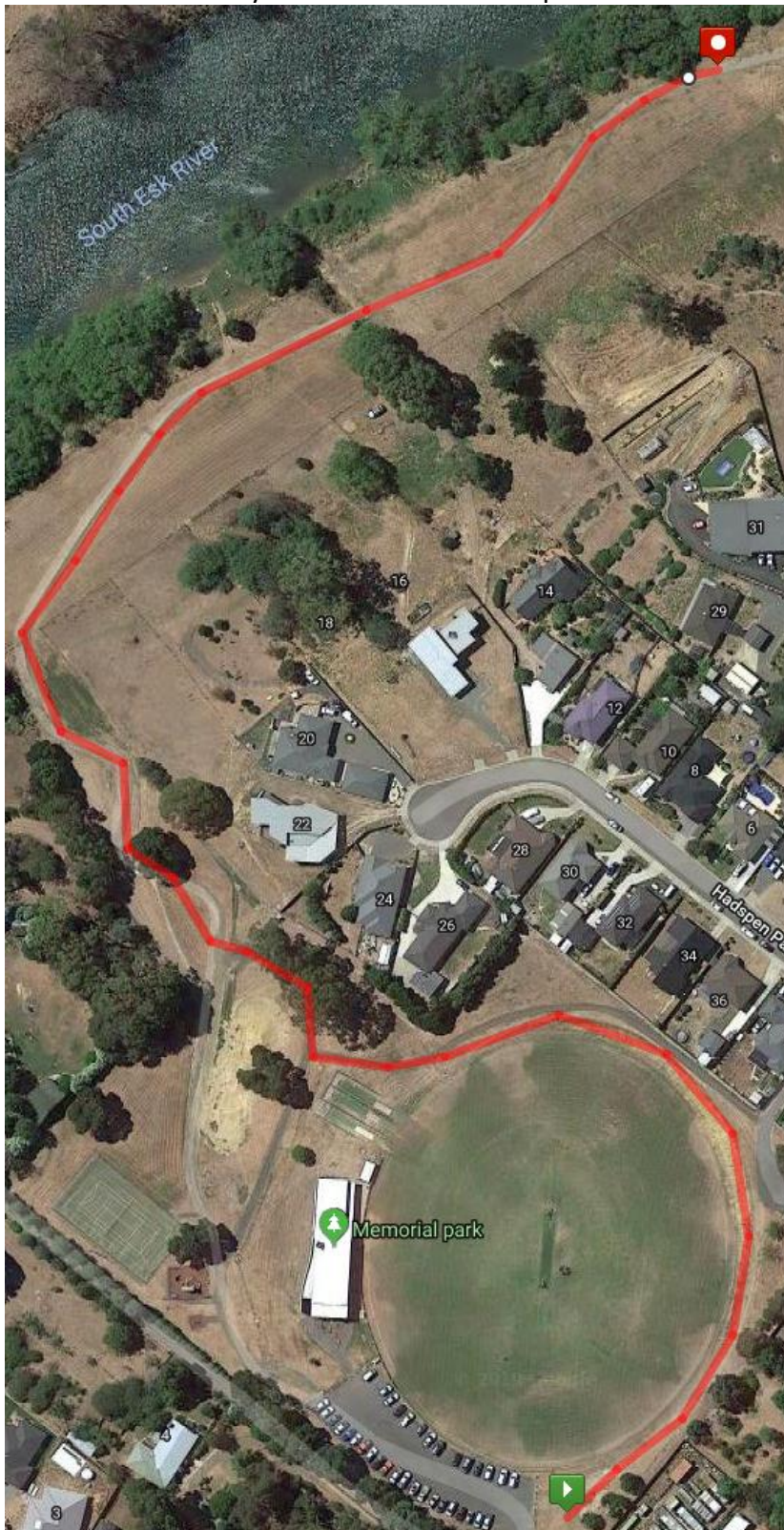


Map to Venue: Proceed to Hadspen and follow Main street. Turn into Claire Street, proceed to Recreation ground.



Event 1.5km:

Start on right of the car park level with the barrier with chalk mark and run round the track outside the oval – Turn right downhill on the path to the river – Follow the path to the cone and return the same way and finish at the start point.



Event 3km

Start on right of the car park level with the barrier with chalk mark and run round the track outside the oval – Turn right downhill on the path to the river – Follow the path to cone and return.– Return the same way and finish at the start point.



Event: 6km

Nice and simple out and back along the 3km course but do it twice.

