

Carr Villa

Address: 36 Nunamina Avenue, Kings Meadows

Meet: Southern grassed area, between cemetery and Finney Funerals

IMPORTANT SAFETY NOTE: Due to extreme danger of children and traffic interaction when crossing the road at Carr Street and Nunamina Avenue, we require that all families aim to cross to the meeting area once only. Parents need to supervise their children and ensure they are not putting themselves or other children in danger by crossing the road. Our BBQ and Gazebo will be setup on the grassed area near the path to Pinkard Street. Why not bring a picnic blanket and make it a picnic races day 😊.

Start: 1:00pm

Divisions 1 and 2 will start at 1pm. Division 3 will start at the conclusion of Division 2 or earlier if volunteer timekeepers are available. (Division 3 is the LAST event today)

Distances:

- Division 1 – 6 km
- Division 2 – 3 km
- Division 3 – 1.5km

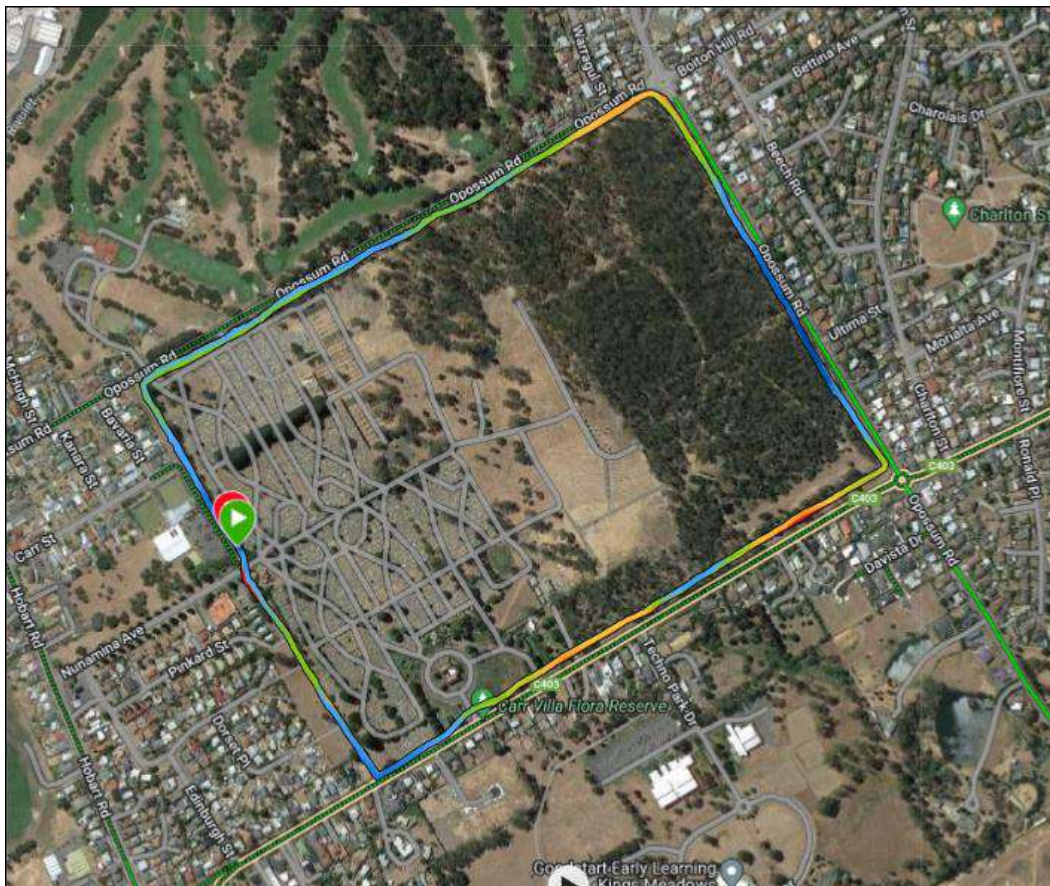
Type of Race: Handicap events today for all races

Course Description: We hit the foot path today, it's a hilly around the block run. Note: For division 1 and 2, there is a change in distance and slightly modified course this year for safety reasons. This ensures we do not cross the road at the cemetery during the race. (Nunamina Avenue)



Division 1 – MODIFIED FROM PREVIOUS YEARS – to ensure we do not cross a road.
(Nunamina Avenue)

- The first lap is in an anticlockwise around the footpath as shown, to just before the entrance to the cemetery where there will be a cone (and maybe a marshal if we have enough volunteers).
- Turn around the cone and return the way you came (clockwise around the block) back to the start.



Division 2 - MODIFIED FROM PREVIOUS YEARS – to ensure we don't cross Nunamina Avenue during the race, is just one lap.

- Starting at the cone which is the turn around for division 1, follow the footpath around the block to the end (which is the start of the Division 1 race).

Division 3 is an out and back along the footpath as shown There is an uphill at the start (BOOOOO!) but as its an out and back, this means there is a down hill at the end 😊

For safety reasons, we request some assistance for our short course.

We will need marshals:-

- at the turn onto the road,
- at the entrance to the cemetery off Quarantine Road,
- at the turnaround point.

