

Heritage Forest #1

Address: Heritage Forest, Conway Street, Invermay

Meet: BBQ Area, Conway Street entrance of Heritage Forest.

Start: 1:00pm

Divisions 1 and 3 will start at 1pm. Division 2 will start at the conclusion of Division 3 or earlier if volunteer timekeepers are available.

Distances:

Division 1 – 5km

Division 2 – 3km

Division 3 – 1.5km

Type of Race: As it's the first race of the season, today is a Scratch for all divisions (Bulk start)

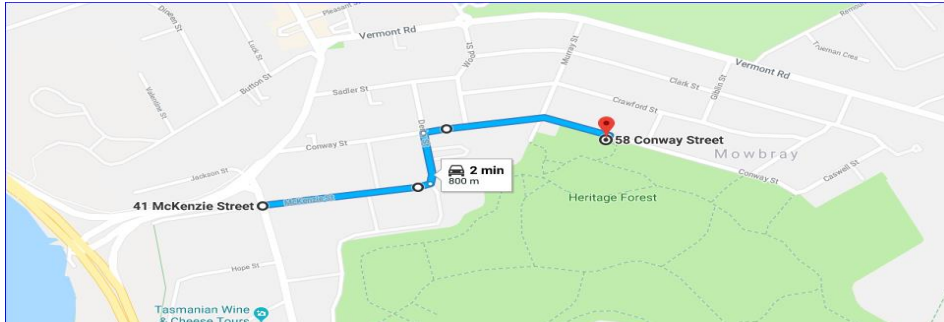
BONUS OPPORTUNITY. For these races if you beat your fastest km rate from any of our events last season, you get an extra 20 consistency points.

This is a Personal Best Competition



Course Description: This is an easy flat course following the trails through Heritage Forest.

How to get there: Proceed towards Mowbray via Invermay Road. Turn into Mackenzie street and follow until you get to Conway Street where you turn right. Its approximately two blocks along on your right. There is a carpark, or you can park on the street.



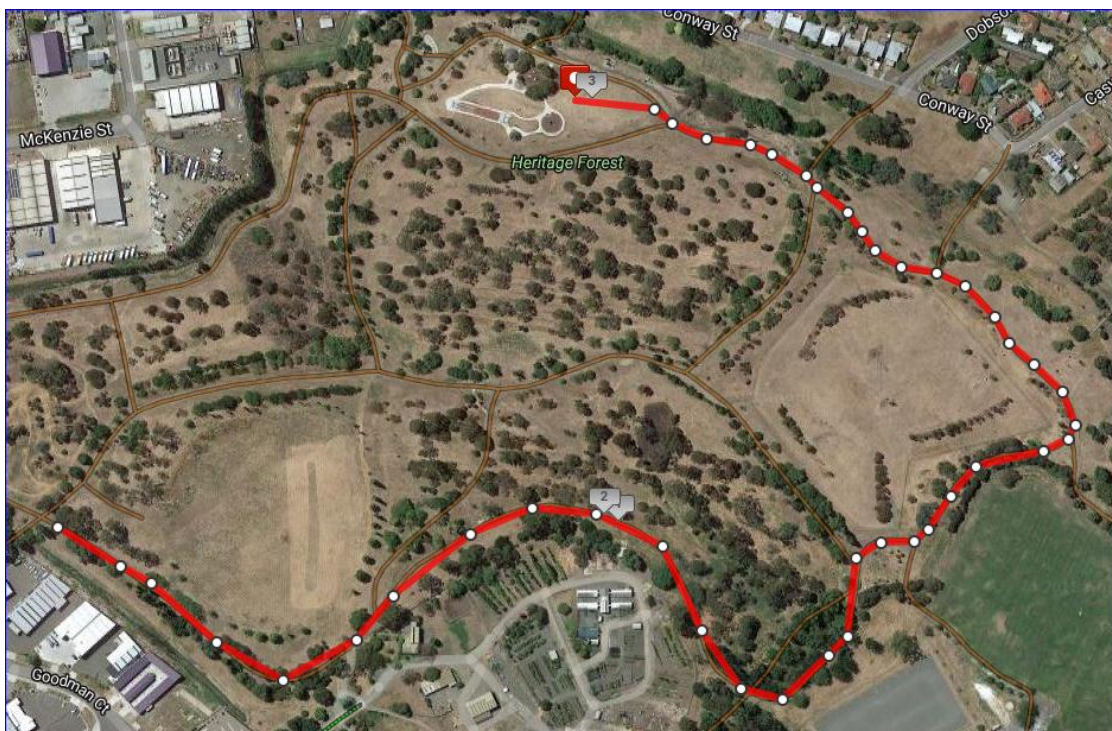
Event 1.5km:

This is an out and back course starting near the playground. It follows the trails to a cone and then returns to the start following the same track.



Event 3km

Follows the same course as the 1.5 event but further, still following the trails then return along the same course.



Event: 5km

The course starts with a lap of the playground area (following the green arrows), then follow the pink then red arrows (basically you do the outer track twice). This is a fast course, excellent to test your speed.

