

## **Harveydale**

**Address:** Harveydale Rodeo Grounds - Birralee Road, Birralee, Tasmania (approx. 1km past turn off to Selbourne) – Allow 40 mins from Launceston

**Meet:** At the rodeo grounds near the toilet block

**Start:** 1:00pm

Divisions 1 and 3 will start at 1pm. Division 2 will start at the conclusion of Division 3 or earlier if volunteer timekeepers are available.

### **Distances:**

Division 1 – 7km

Division 2 – 4km

Division 3 – 2km

**Type of Race:** Handicap events today for all races

**Course Description:** Beautiful bush / paddock setting. Running along farm roads some very old and overgrown, built by Barbara's dad more than 50 years ago.

**2km event** will be held within the rodeo grounds

**4km course** Start in the rodeo grounds then head out along the farm road in a westerly direction until you reach the closed gate at the gun club and return

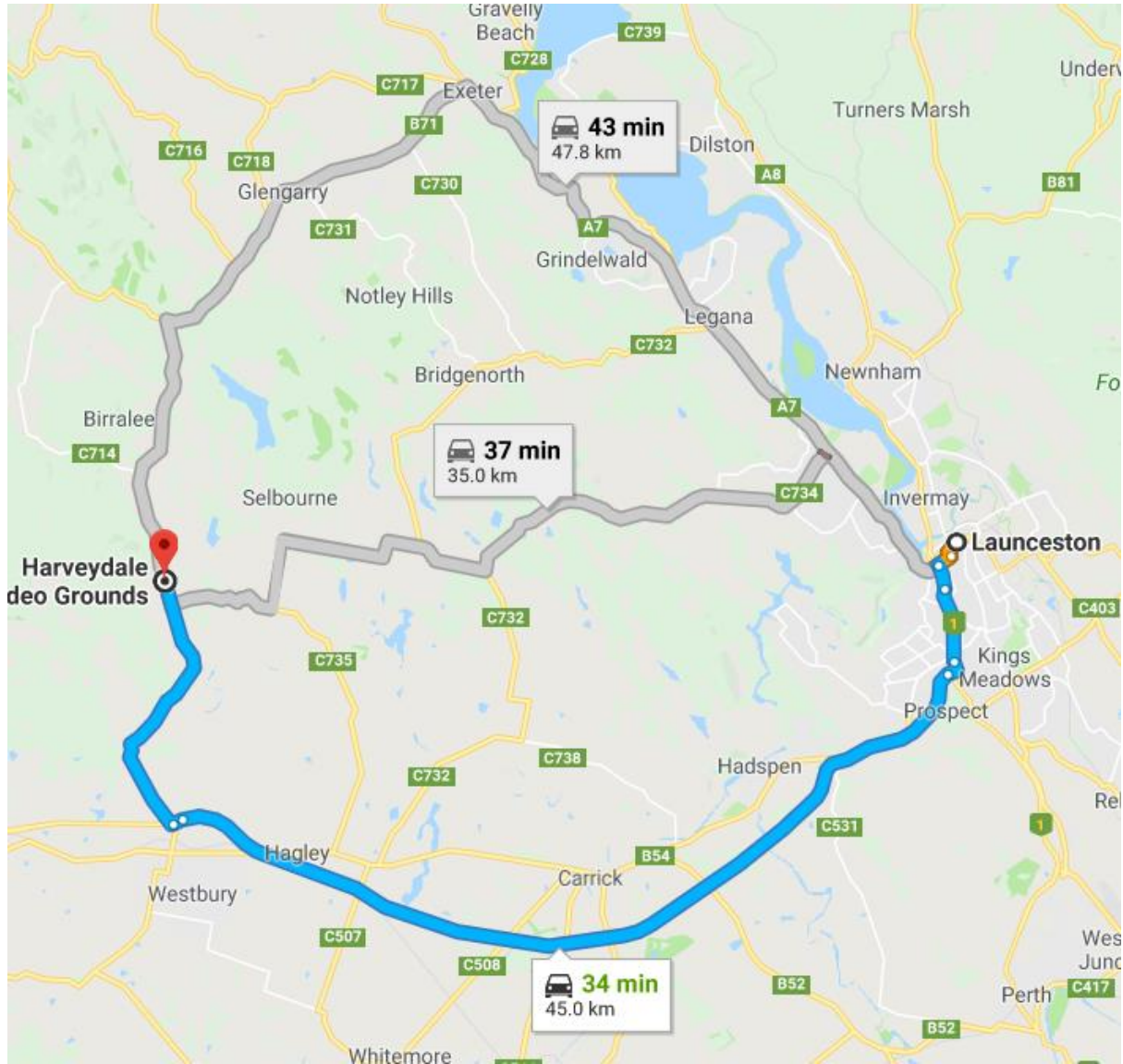
**7km runners** will start as the 4k, When you get to a Keep Out sign and a 1 bar gate, you can either go around, under or over. There is a gun club on your right as you continue. They are not shooting today ☺. You will need to negotiate a dip where the road has been cut away to stop vehicles. Once past this you are treated to a lovely overgrown trail with bush on both sides. It is nice and flat and lovely to run on. You may need to jump a couple of fallen small trees. As you descend a gentle slope you will be guided to the left where you will begin a true technical uphill trail, turn left again along a farm road, then return. It will be well signed.

**This is a Personal Best Event.**

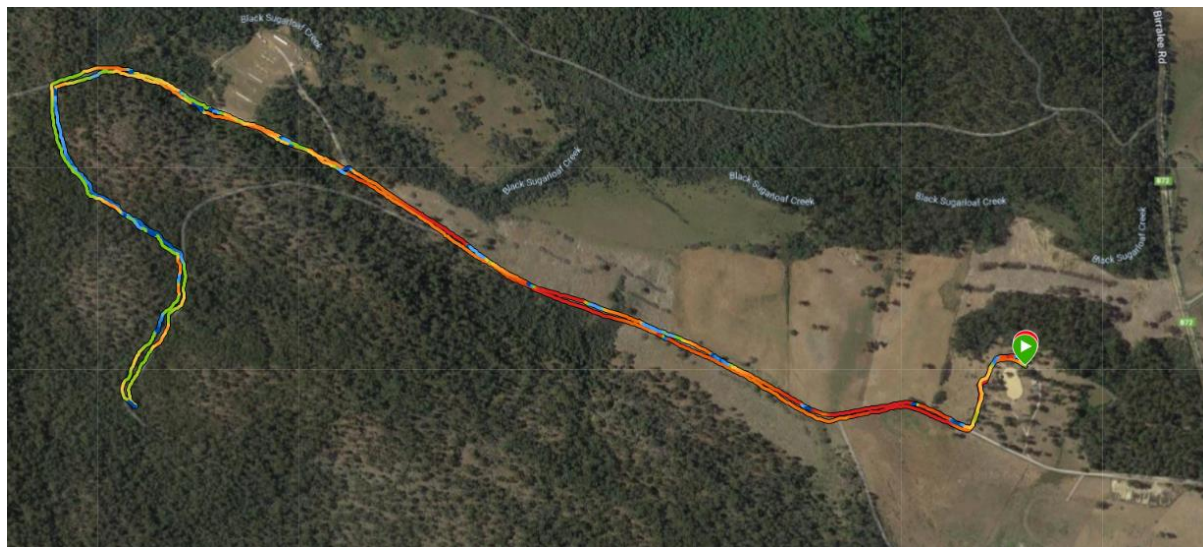


**How to get there:** Travel to Westbury then head north along Birralee road for approximately 12km. Harveydale is on your left. It is well signed. Travel down the road about 400m, you will see the rodeo entrance to your right.

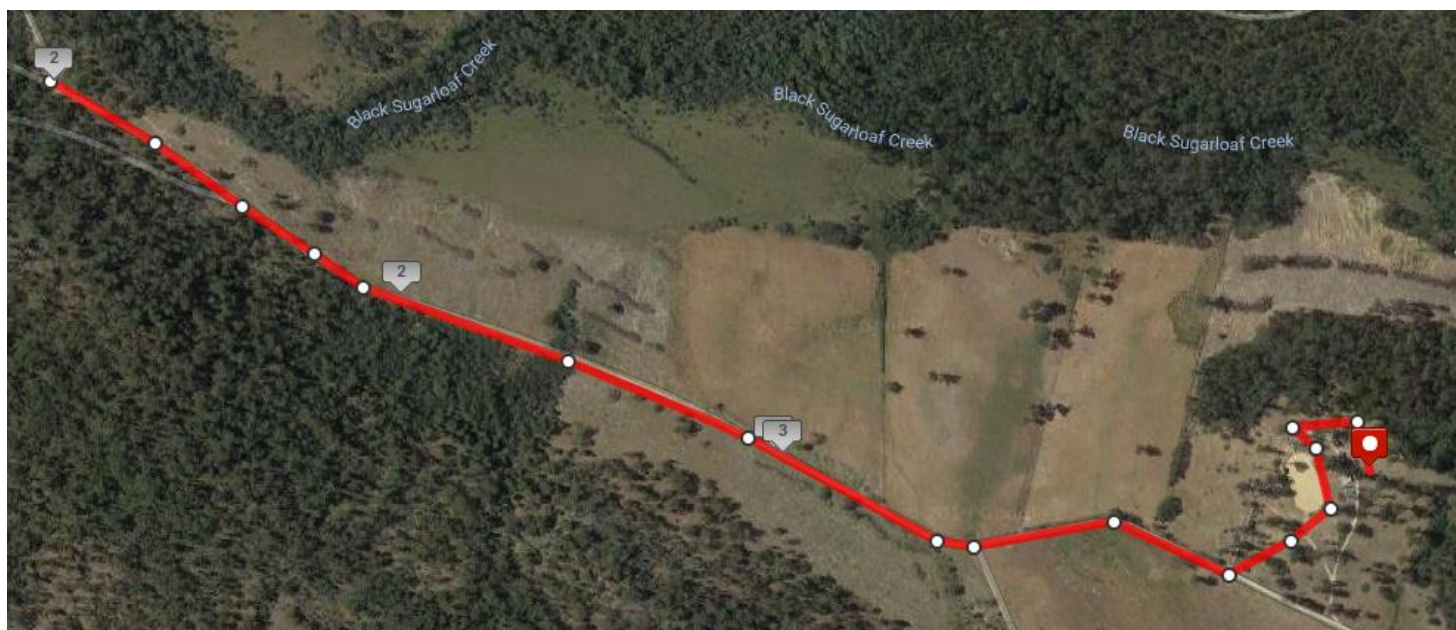
**Map to Venue:**



**Event: Division 1 – 7km**



**4 km course**



**2km course :**



**Pictures from the 7km course**



